

## GFJDZ0987-35

Voltage transformer

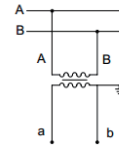
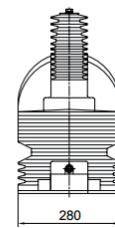
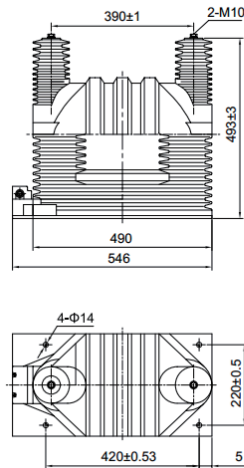


Figure-1

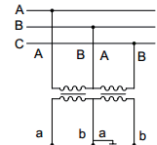


Figure-3

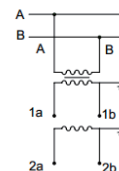


Figure-2

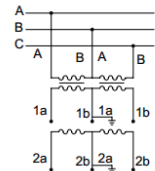


Figure-4

## Parameters

| Technical parameters   |                                       |
|------------------------|---------------------------------------|
| Standards              | IEC60044; IEC 61869; ANSI/IEEE C57.13 |
| Rated Voltage          | 35KV                                  |
| Rated load             | ≤320VA                                |
| Rated frequency        | 50Hz or 60Hz                          |
| Cosφ                   | 0.8 (lag)                             |
| Phase number           | Single                                |
| Rated insulation level | 12/42/75KV, 7.2/32/60KV               |
| Class of pollution     | II                                    |
| Mechanical parameters  |                                       |
| Material               | Epoxy resin                           |
| Weight (kg)            | 58                                    |

| Operating conditions  |   |
|-----------------------|---|
| Operating temperature | -25°C to +55°C  |
| Daily average temp    | <+40°C  |
| Storage temperature   | -40°C to +70°C  |
| Altitude              | <1000 meters  |
| Condition             | No existence of severely begrimed, erosive and radioactive gas in the air. Permission of long-term operation under rated current. |

## Selection guide

| Model        | Rated Voltage Ratio(KV) | Accuracy Class Combination    | Rated output (VA)       | Limiting Thermal Output(VA) |
|--------------|-------------------------|-------------------------------|-------------------------|-----------------------------|
| GFJDZ0987-35 | 35/0.1                  | 0.2<br>0.5                    | 60<br>120               | 800                         |
|              | 35/0.1/0.1              | 0.2/0.2<br>0.2/0.5<br>0.5/0.5 | 20/20<br>20/30<br>40/40 | 400                         |